



MORAINE PARK
TECHNICAL COLLEGE

Growing Data Governance at MPTC

Laura Waurio – Director of Institutional Effectiveness, Reporting, & Planning

AIRUM 2024

Wisconsin Technical College System (WTCS)

- Undergraduate Programming
 - Associate Degrees
 - Technical Diplomas
 - Certificates
 - Apprenticeships
- Non-credit Courses
 - Vocational
 - Community Education
- Adult Basic Education

Moraine Park Technical College (MPTC)

- 2023-24 by the numbers
 - 15,461 students
(includes dual credit high school students)
 - 3,471 students pursuing undergraduate programs
- 3 campuses
 - Fond du Lac
 - Beaver Dam
 - West Bend
- Top programs
 - Nursing
 - Business Management



DATA GOVERNANCE CROSS-FUNCTIONAL TEAM

Vision

Enhance the value, quality, security, accessibility, accountability, and understanding of institutional data through formal cross-functional leadership.

Mission

MPTC will manage data as an institutional asset to drive continuous improvement.

Objectives

- Create, communicate and adhere to data management policies and procedures.
- Define data-specific roles and responsibilities, and train employees to carry out those responsibilities.
- Implement data management tools.
- Consistently and clearly define data to ensure the same question gets the same answer.
- Educate employees on data access and usage.

Membership

Accountable Managers (Sponsors)

- Dean of the West Bend Campus
- Chief Information Officer

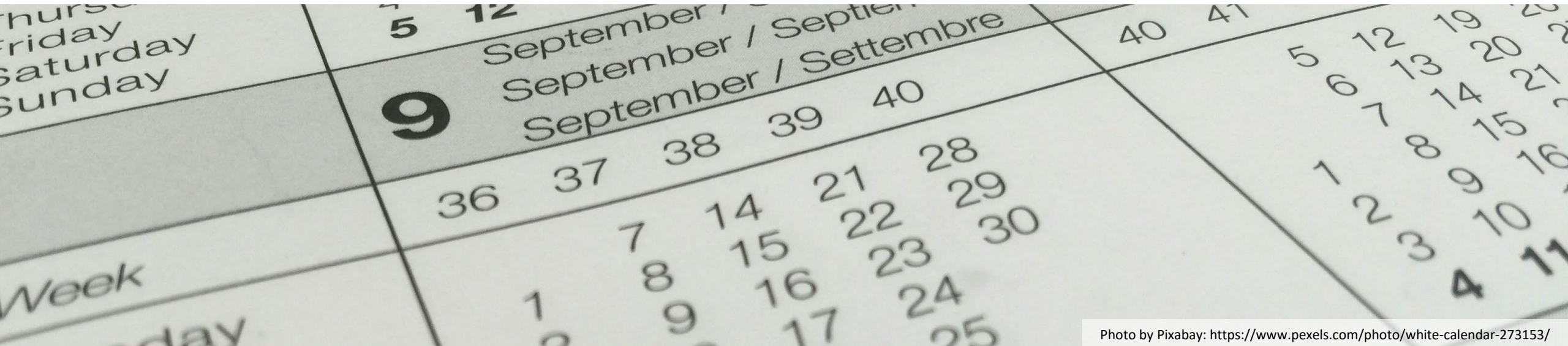
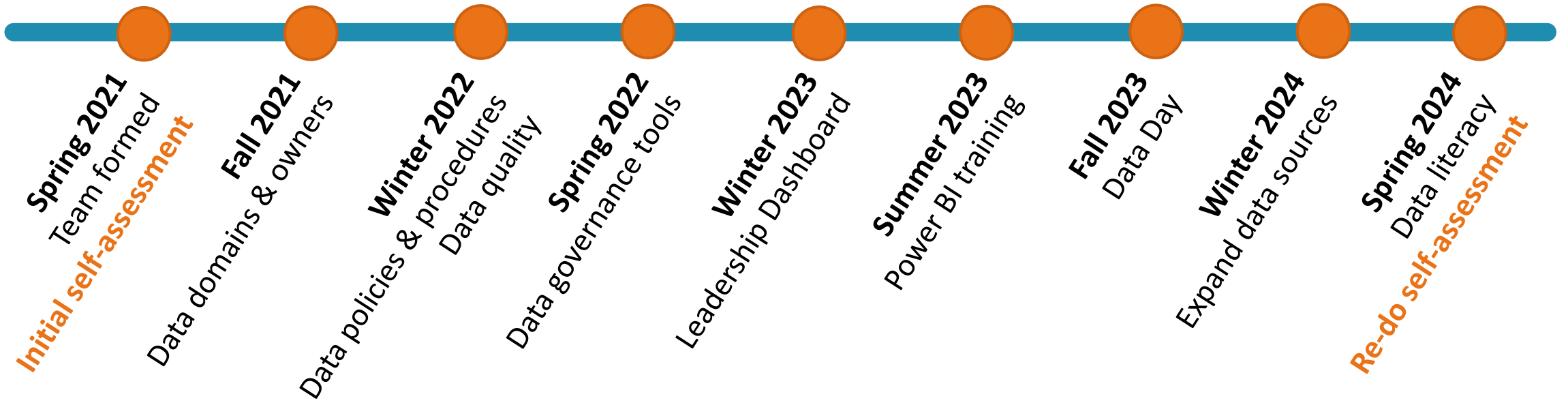
Team Leader

- Dir. of Institutional Effectiveness , Reporting & Planning

Team Members

- Director of Network Services
- Director of Enterprise Systems
- Manager of Data Security & Systems Engineer
- Director of Finance
- Financial Aid Manager
- Registrar & Enrollment Services Manager
- Teaching & Learning Innovation Manager
- Human Resources Generalist

Data Governance Cross-Functional Team Timeline



Data Domains & Owners

Data Domain	Data Owner Job Title
Admissions	Director of Enrollment Management
Adult Education	Associate Dean of Adult Education
Advising	Advising and Retention Manager
Affirmative Action	Human Resources Generalist
Benefits	Total Rewards Manager
Budget	Director of Finance
Class Scheduling	Academic Information Systems Specialist
Compensation	Total Rewards Manager
Counseling	Director - Diversity, Accessibility & Support Services
Course Enrollment	Registrar and Enrollment Services Manager
Courses & Classes	Registrar and Enrollment Services Manager
Curriculum	Teaching & Learning Innovation Manager
Facilities	Director of Facilities
Financial Aid	Financial Aid Manager

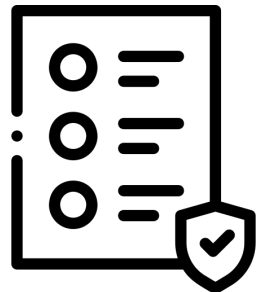
Data Policies & Procedures

Data Governance Policy:

- Research Methods Procedure
- Institutional Review Board Procedure
- Requesting and Using Contact Information Procedure

Student Data Privacy Policy

<https://go.morainepark.edu/policies-and-procedures>



Data Quality

IT ticketing system:

- Dev Ops
- #DQ
- Institutional Effectiveness intervention
(IT issues vs. Functional Area issues)



Data Governance Tools Exploration

Needs:

- Business Glossary
- Data Dictionary
- Data Lineage
- Data Product Catalog



Leadership Dashboard

Key metrics:

- FTEs
- Headcounts

By:

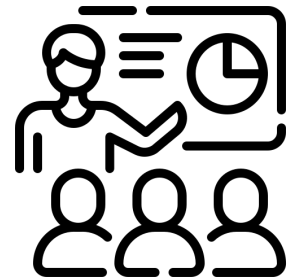
- Month (year-over-year)
- Program / instructional area
- Campus
- Organizational structure (course coordinator)
- Semester



Power BI Training

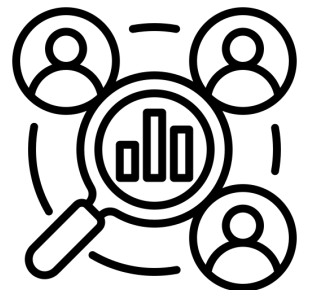
Benefits of formal, in-person training:

- Dedicated time
- Provided employees with the tools they need
- Team building



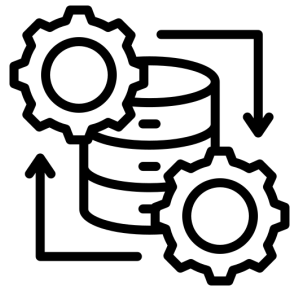
Data Day

- Part of academic program review
- Discussions by program area
- Data-informed improvement plans



Expand Data Sources

- Goal = Leaver Report
- Worked with consulting company
- Data lake vs. vault vs. warehouse



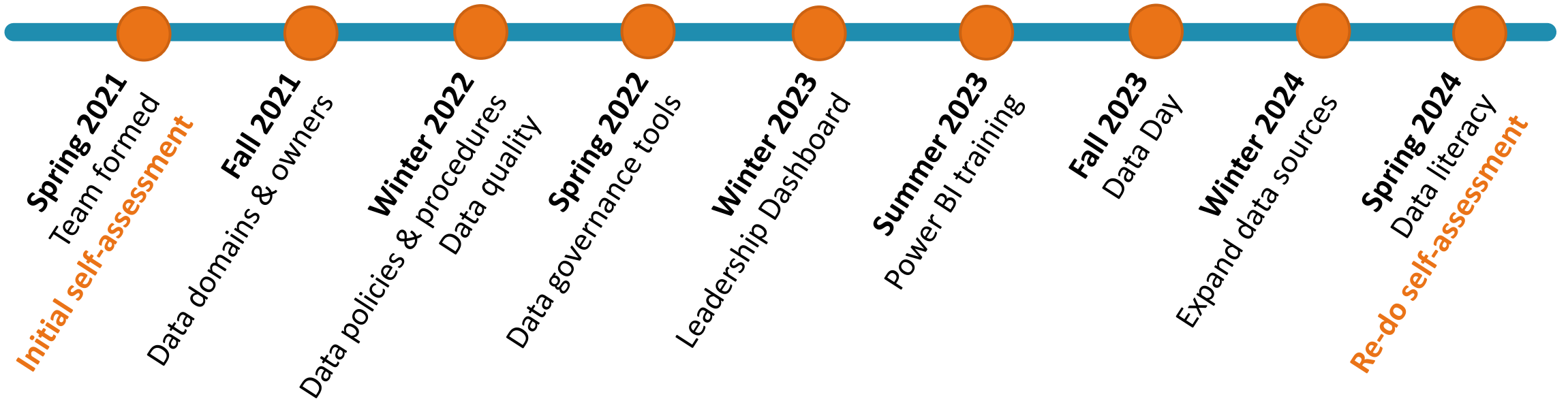
Data Literacy

“Donuts and Data” sessions

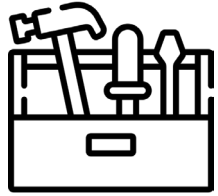
- Institutional Effectiveness 101
- Are You a Data Person?
- WTCS Surveys
- IPEDS & State Reporting



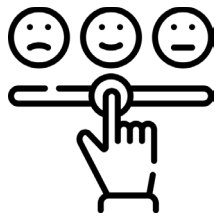
Data Governance Cross-Functional Team Timeline



Data Governance Self Assessment



Data Governance Toolkit



Data Governance Self Assessment

4 Sections

- Data Understanding
- Data Quality
- Data Security
- Strategic Data Usage

[WTCS Resource Page](#)



122 invited

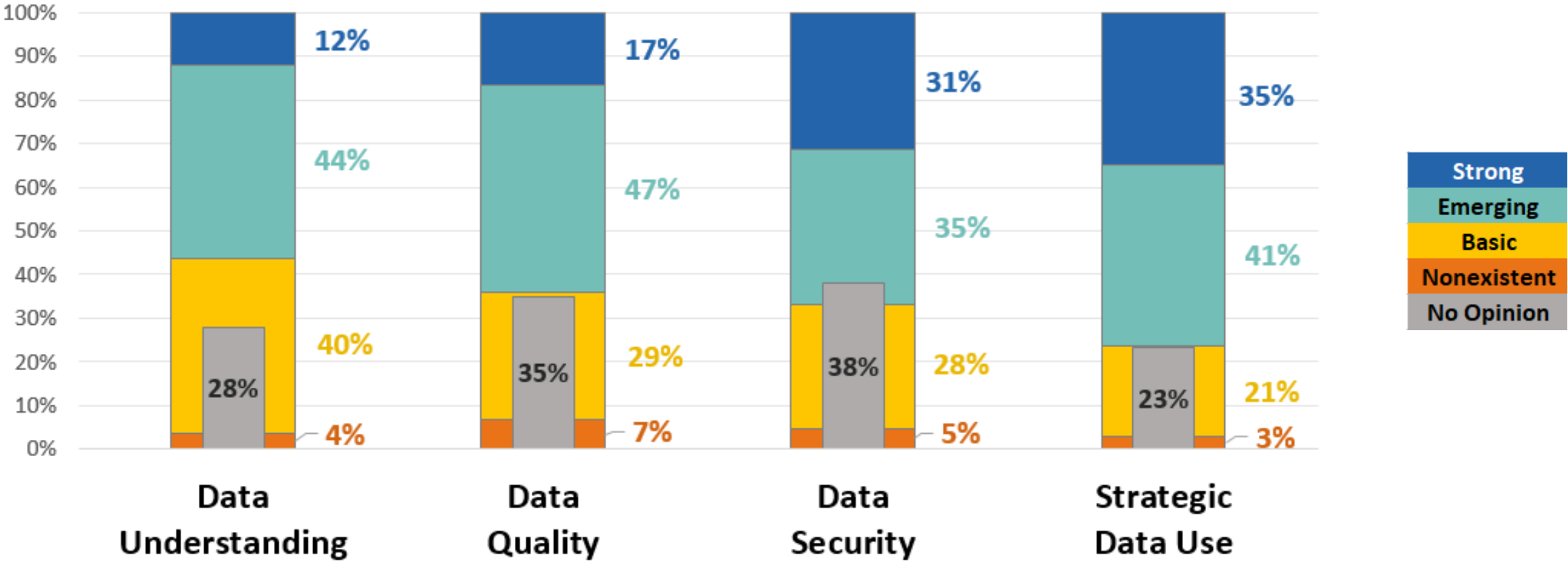
Management Employees +
Client Reporting System Cross-Functional Team

79 responses

65% response rate



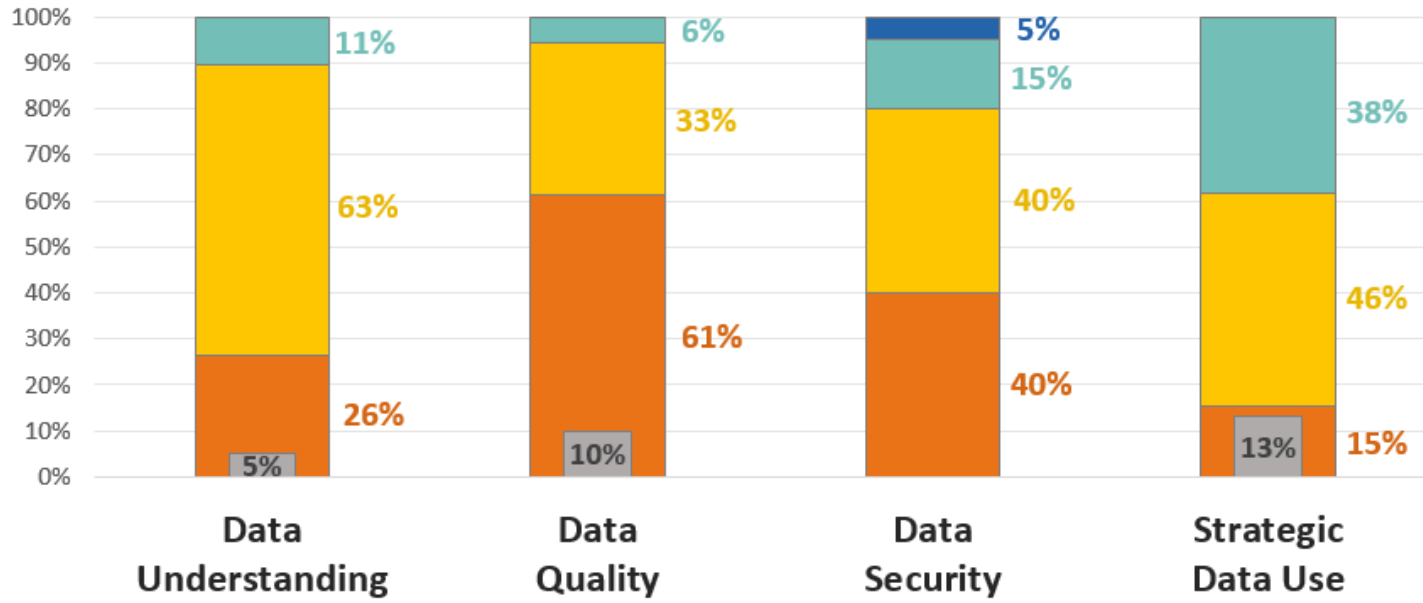
March 2024 - College-wide Assessment



Note: percentages may not sum to 100% due to rounding error

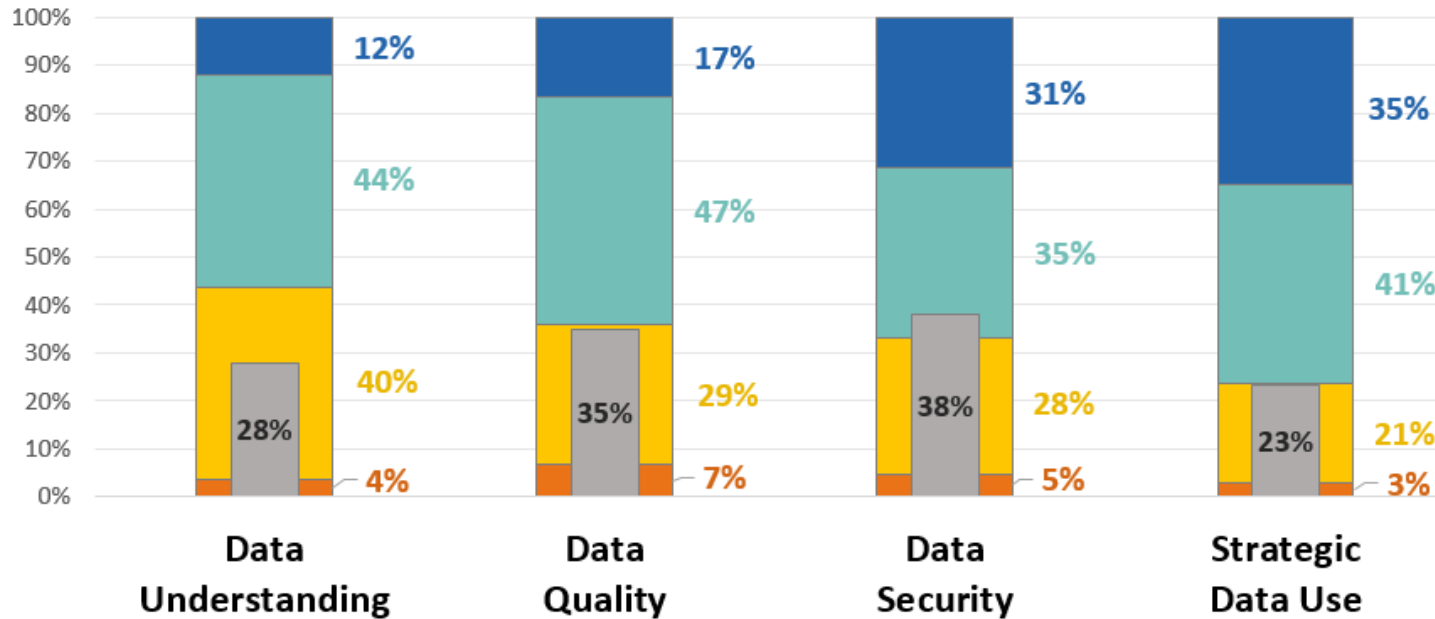
February 2021

Data Governance Team
Assessment
(20 participants)

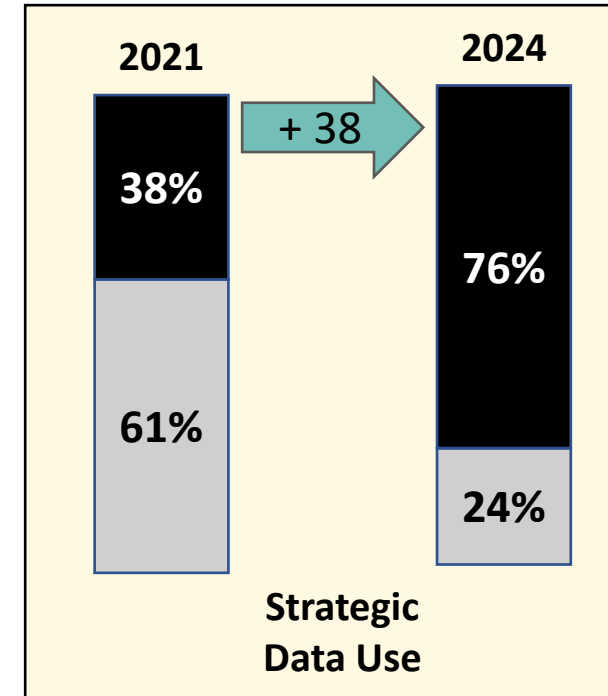
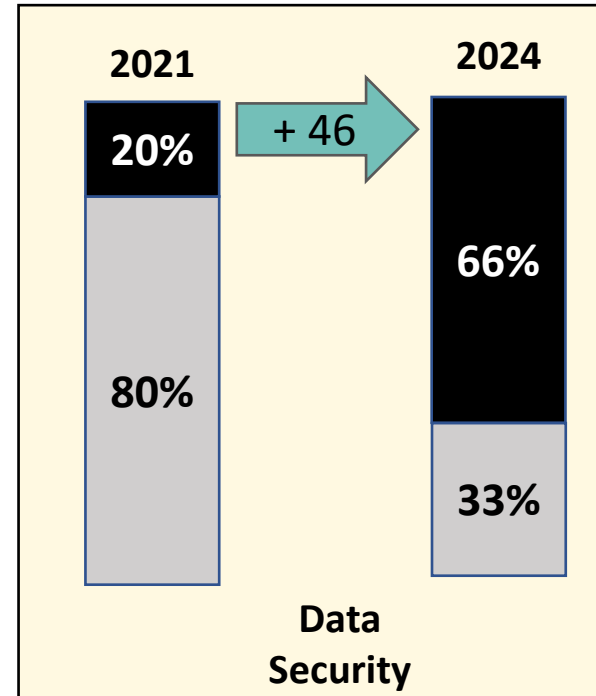
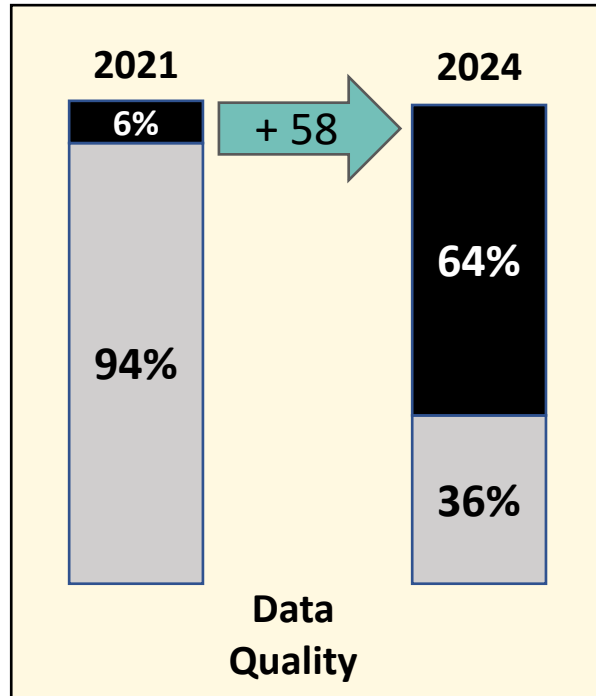
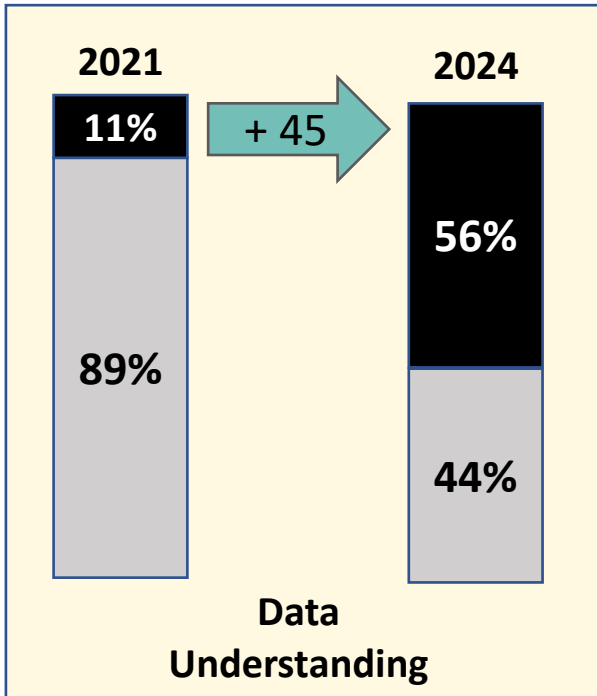


March 2024

College-wide
Assessment
(79 participants)

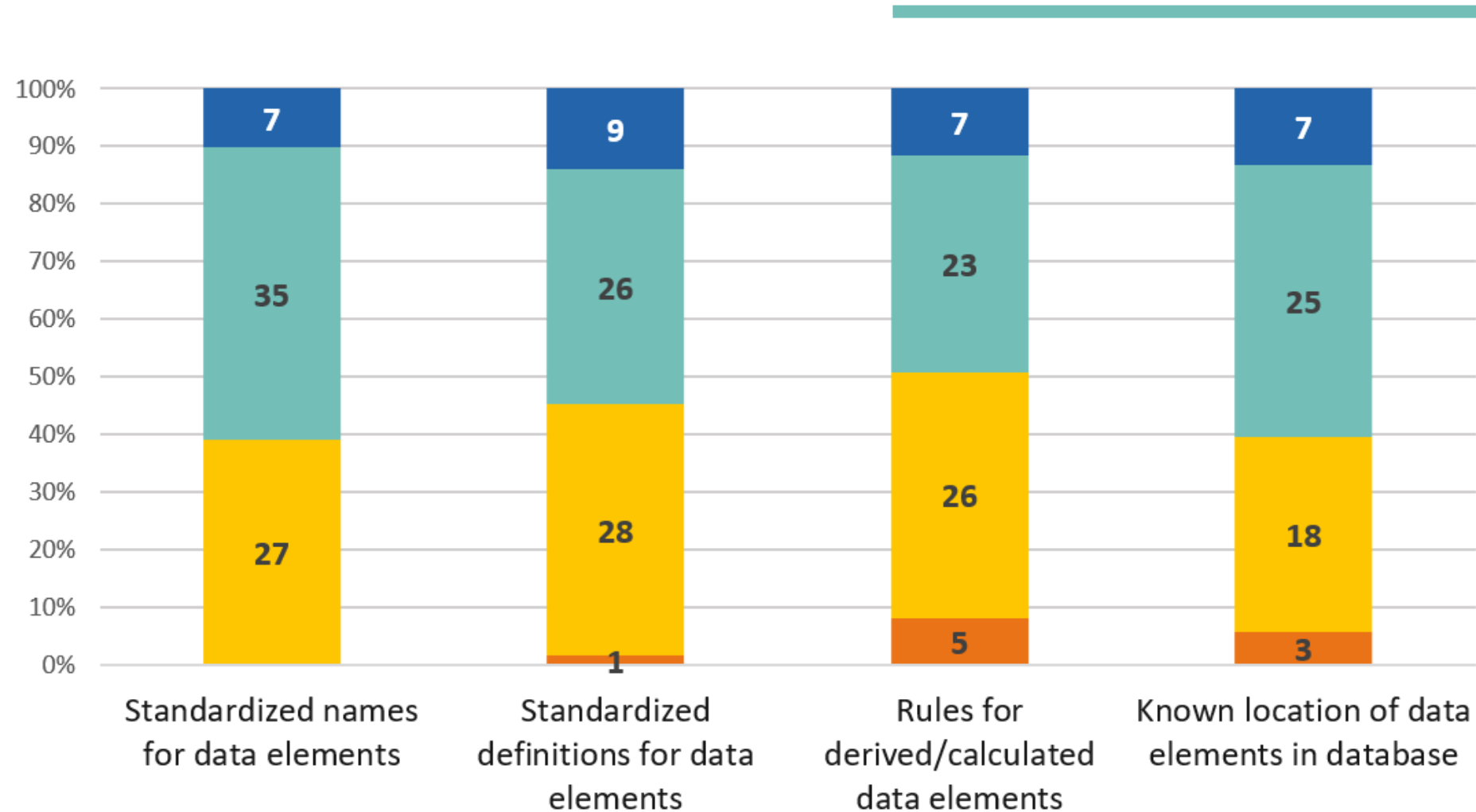


Data Maturity Change Over Time



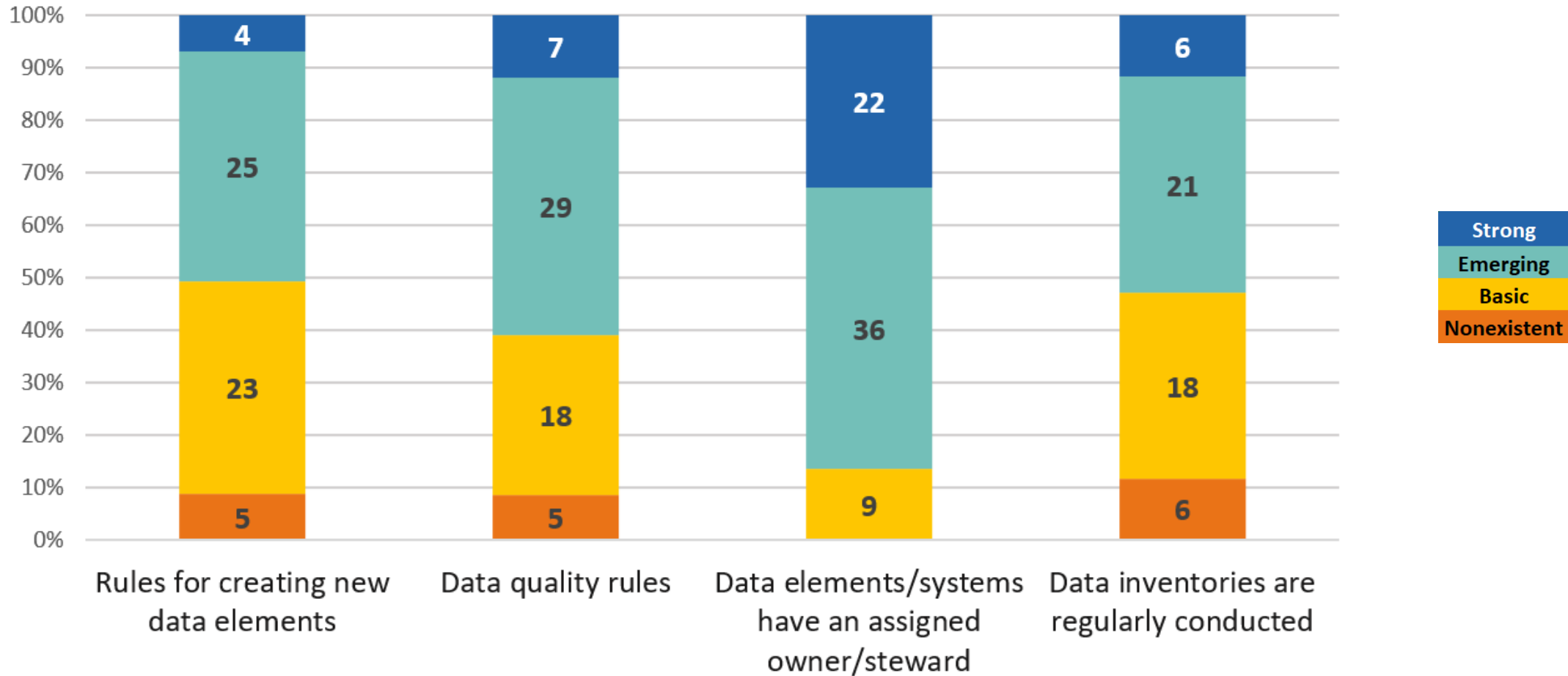
Note: percentages may not sum to 100% due to rounding error

Data Understanding



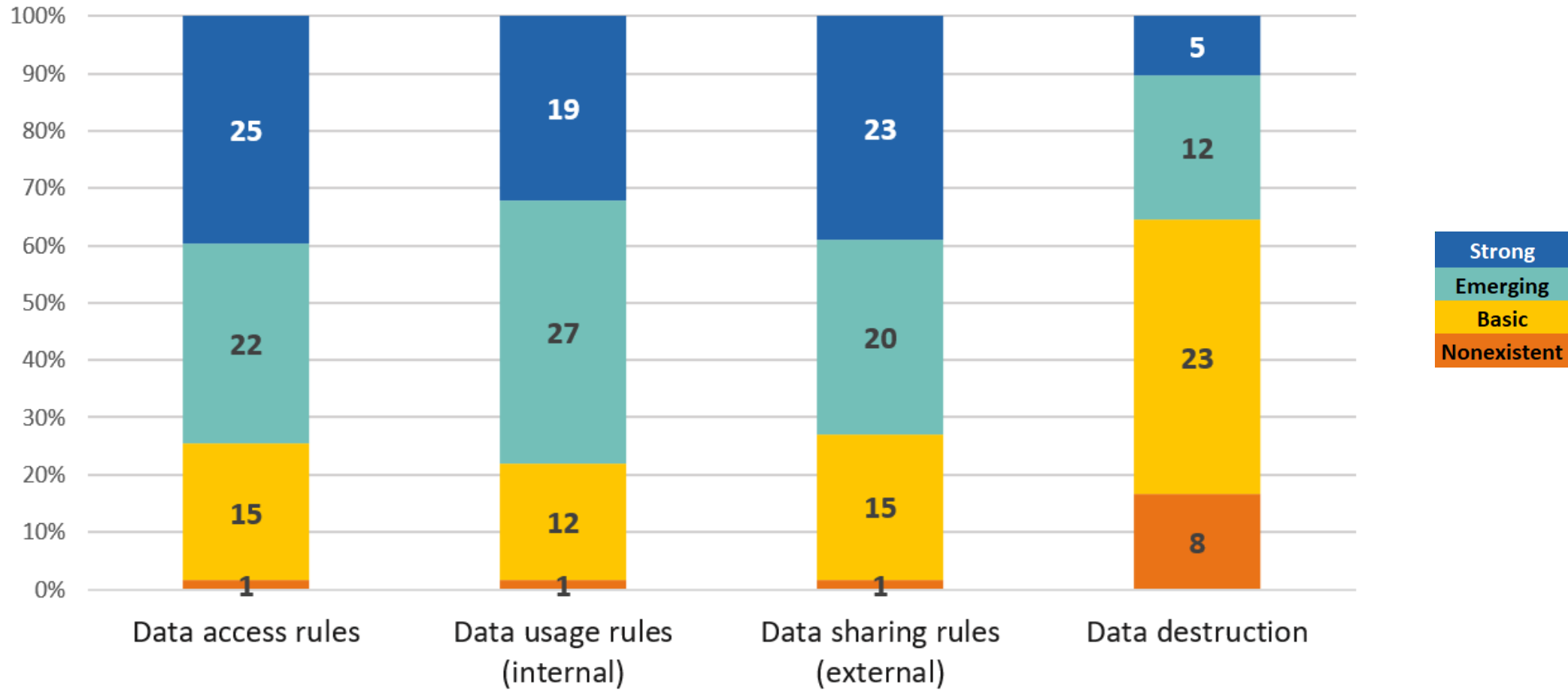
“ There has been more open discussions on data, where it is kept, definitions surrounding the data, what do employees use it for, naming conventions than in the past. **Not there yet but it is moving in a good direction.** ”

Data Quality



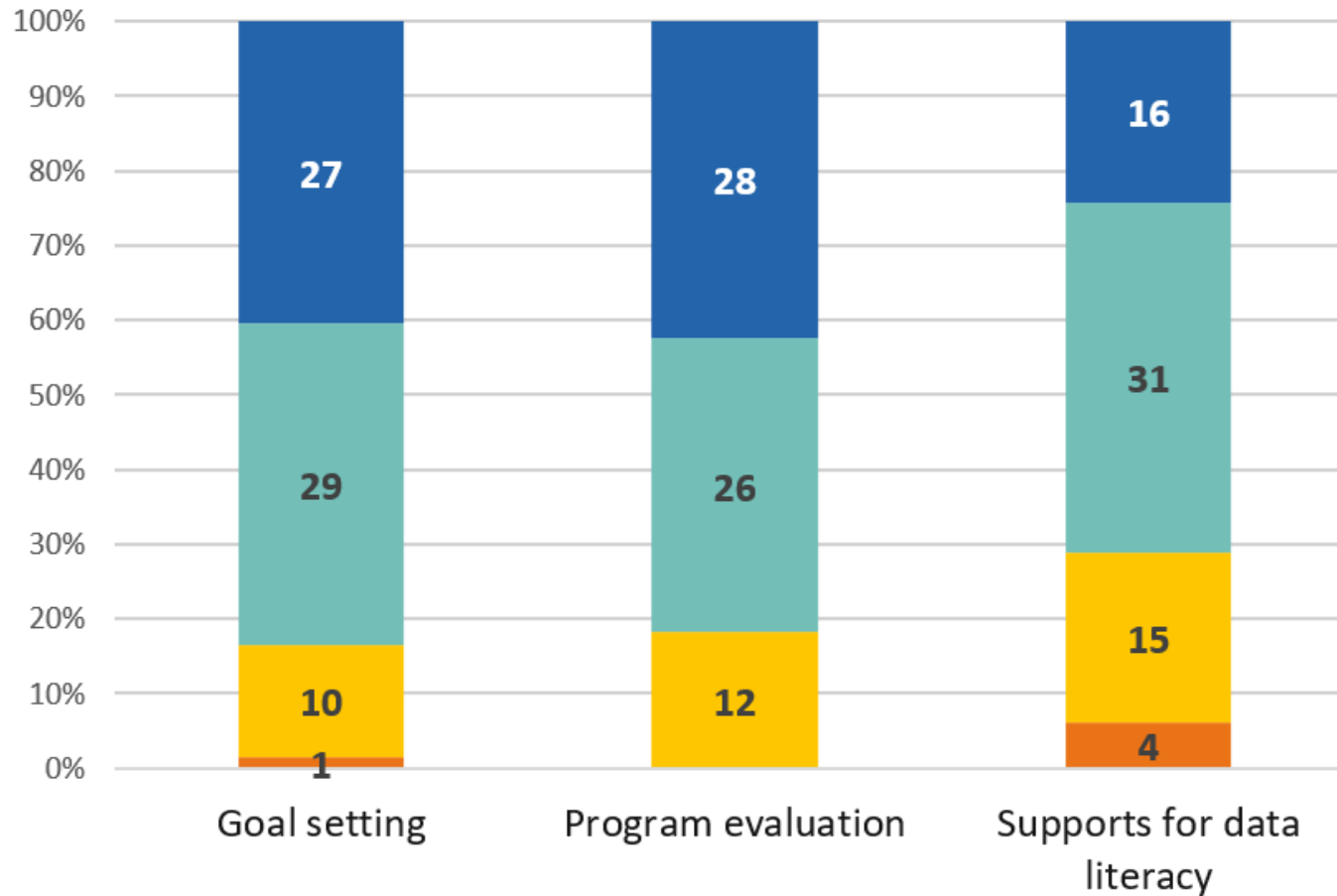
“
Some **audit reports** exist to monitor data quality. More need to be created.
”

Data Security



“ I believe a **protocol exists**, however, I've not seen it documented. ”

Strategic Data Use



“

I have seen **much more of this** in the last two years.

The IE team is always willing to help, explain and meet with you regarding data.

”

Key Takeaways – Accomplishments

- MPTC's data maturity has grown extensively in the past 3 years – especially data quality
- Data maturity by category
 - Strategic Data Usage: 76% rated as Strong or Emerging
 - Data Security: 66% rated as Strong or Emerging
 - Data Quality: 64% rated as Strong or Emerging
 - Data Understanding: 56% rated as Strong or Emerging

Key Takeaways – Areas for future focus

- Data retention procedures
- Train data owners/stewards and involve them more in data quality, security & literacy
- Expand data literacy training
- Educate new and existing employees on data policies & procedures
- Improve documentation
 - Data product catalog
 - Business glossary
 - Data dictionary

Questions?

